

WE ARE weCHC

This newsletter is brought to you by Windsor Essex Community Health Centre

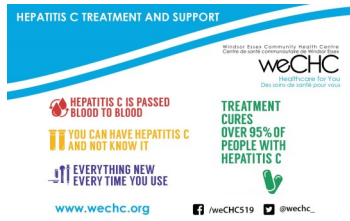
VOL. 1, ISSUE 1

07.2020

Top stories in this newsletter



We have a new look!



World Hepatitis Day



Bringing healthcare to you

weCHC Launches Newsletter



Welcome to the first edition of We Are weCHC - an external newsletter bringing you the latest and greatest information related to the happenings at weCHC. From programming to hours of operation you will find out the all the latest news right here.

We Have a New Look!



Recently, we updated our exterior signage at all six of our physical locations. In addition we had new window graphics completed at our Diabetes location on Lauzon, our Pickwick location in Pickwick Plaza and our Teen Health location in downtown Windsor on Ouellette Ave. We also have a new mailing address, our main office has moved to our Sandwich location, 3325 College Ave.

World Hepatitis Day



On July 28, 2020 people around the world will acknowledge World Hepatitis Day in an effort to raise awareness about viral hepatitis and the global effort to eliminate it.

Windsor Essex Community Health Centre Hepatitis C Treatment & Support team is a specialized inter-professional team that works collaboratively with healthcare, and social service providers. The goal of the team is to establish support and treatment and to ensure that clients affected with or at risk of acquiring Hepatitis C have access to quality specialized care. Our team helps prevent the spread of the Hepatitis C virus and promotes overall health by providing timely education, testing, support and treatment.

During the week of July 27th the team will be engaging with the community virtually and through outreach.

Call us at our Street Health location 519-997-2824



Food & Fitness with Windsor Essex Community Health Centre



Your TV and weCHC have come together in an effort to deliver a unique approach that bridges the gap between health and wellbeing with our community members. Examples include but are not limited to individuals without internet access, those feeling isolated, and individuals in nursing homes and long-term care homes.

Beginning August 10 2020 you can tune into YourTV on Cogeco Channel 11 or 700HD at 12:30 pm and 4:00 pm and get your body moving with seated exercises brought to you by Certified Fitness Instructors. Individuals that tune in will also receive food tips from one of our Registered Dietitians.



Please visit the **Community Calendar** to learn more about programs in Windsor Essex: <https://wechc.org/events/calendar/>

Windsor Essex Community Health Centre
communications@wechc.org
3325 College Avenue

TH **Teen Health**
1361 Ouellette Avenue,
#101,
Windsor, ON
P: 519-253-8481

DW **Diabetes Wellness**
2885 Lauzon Parkway,
Unit 107,
Windsor, ON
P: 519-997-2823

SH **Street Health**
711 Pelissier Street,
Windsor, ON
P: 519-997-2824

L **Leamington**
33 Princess Avenue,
Unit 450,
Leamington, ON
P: 519-997-2828

P **Pickwick**
Pickwick Plaza,
7621 Tecumseh Road East,
Windsor, ON
P: 519-997-2827

S **Sandwich**
Main Office
3325 College Avenue,
Windsor, ON
P: 519-258-6002